

Tough Touring Pole Less 270 WING Awning to Basket Rack Kit Installation instructions

Be sure to remove belt buckles, sharp objects from your pockets if you don't want to scratch your paint on vehicle. Cover paint areas with rags where possible and protect it against ladder strike etc.

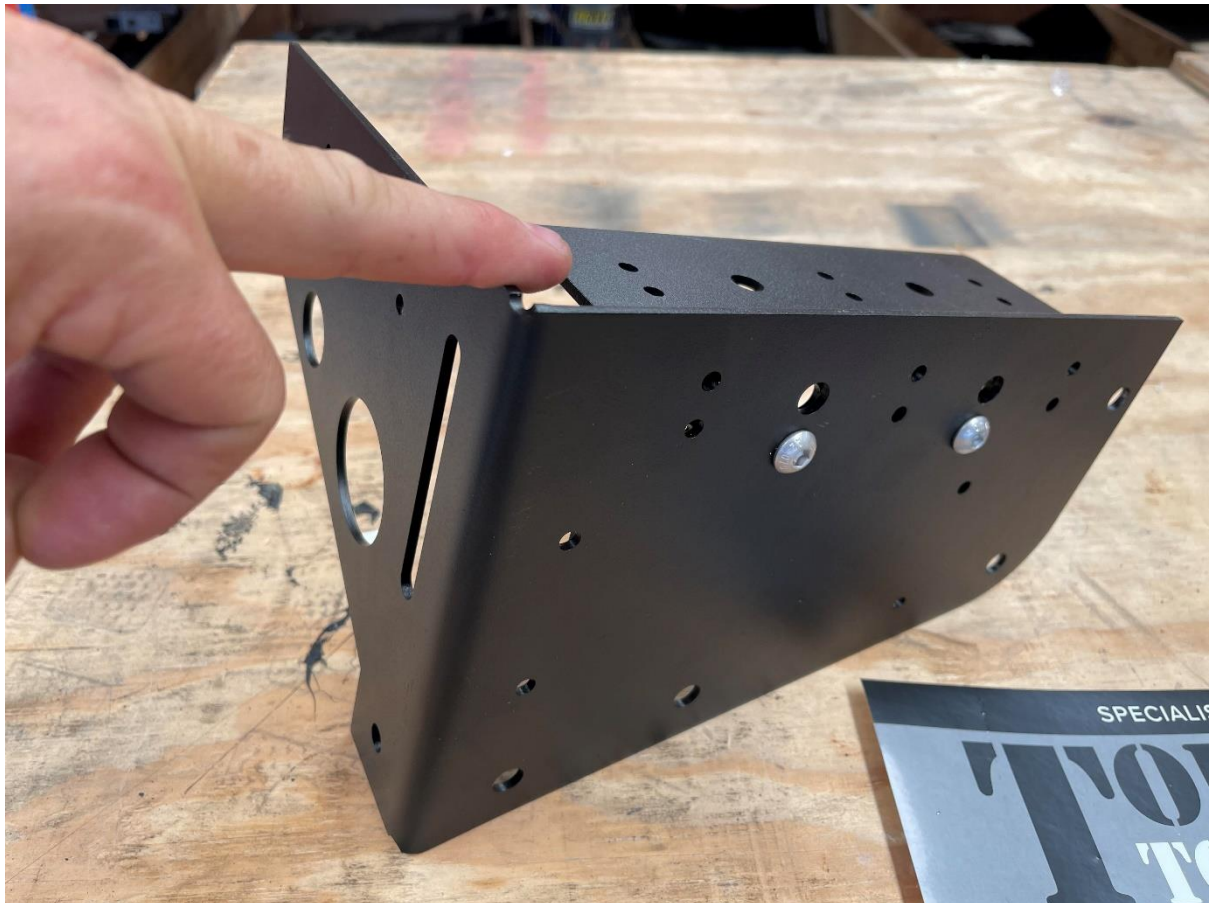
Kit contents – Please note that this kit includes the Aluminium spacer blocks which are optional. The spacer blocks are required for most pole less wing awnings except the OSTRICH WING 270, which already has spacer blocks included with the awning. Be sure to purchase the blocks as well if using any other pole less wing awning as the awning back plate needs to be pushed out around the 'Hoop bars' welded to the sides of the basket racks – the hoop bars are the joining steel that joins the top bar and bottom bars together. Thicknesses of the bar itself and the hoop bars vary, and so does the offset inwards on the top bar – so theres no fixed install that works every rack – You have to place the brackets in position and see what works for your particular rack. (So some parts won't be used)



1. The kit is pictured below is in correct orientation as per how it sits on your rack, looking at the tent from the passenger side of the tent / vehicle ... Assuming the awning is being hung

on the passenger side of the vehicle. The Laser cut steel brackets may Vary over time as designs change. This 'SLOTTED' variant is used for most types of pole less wing awnings and can accommodate Ostrich wings, Bundu Awns, Howling moon Awnings, Quick Pitch as well as 30 second awnings and Rhino Batwing.– Not all awnings can use the included Hook bracket at rear drivers side, however it can be a handy place to hang rubbish bags / shoes etc anyway. (So you may as well fit it.)

2. Included in the pack of fitting hardware + Open Aluminium 6/6 rivets, 6 bolts and nuts (For assembling parts while fitting) a handful of tec screws to hold brackets in place on your tent while you drill out the holes for the rivets. – Some parts may not be needed but are included in case your short. It is normal to have parts left over 😊

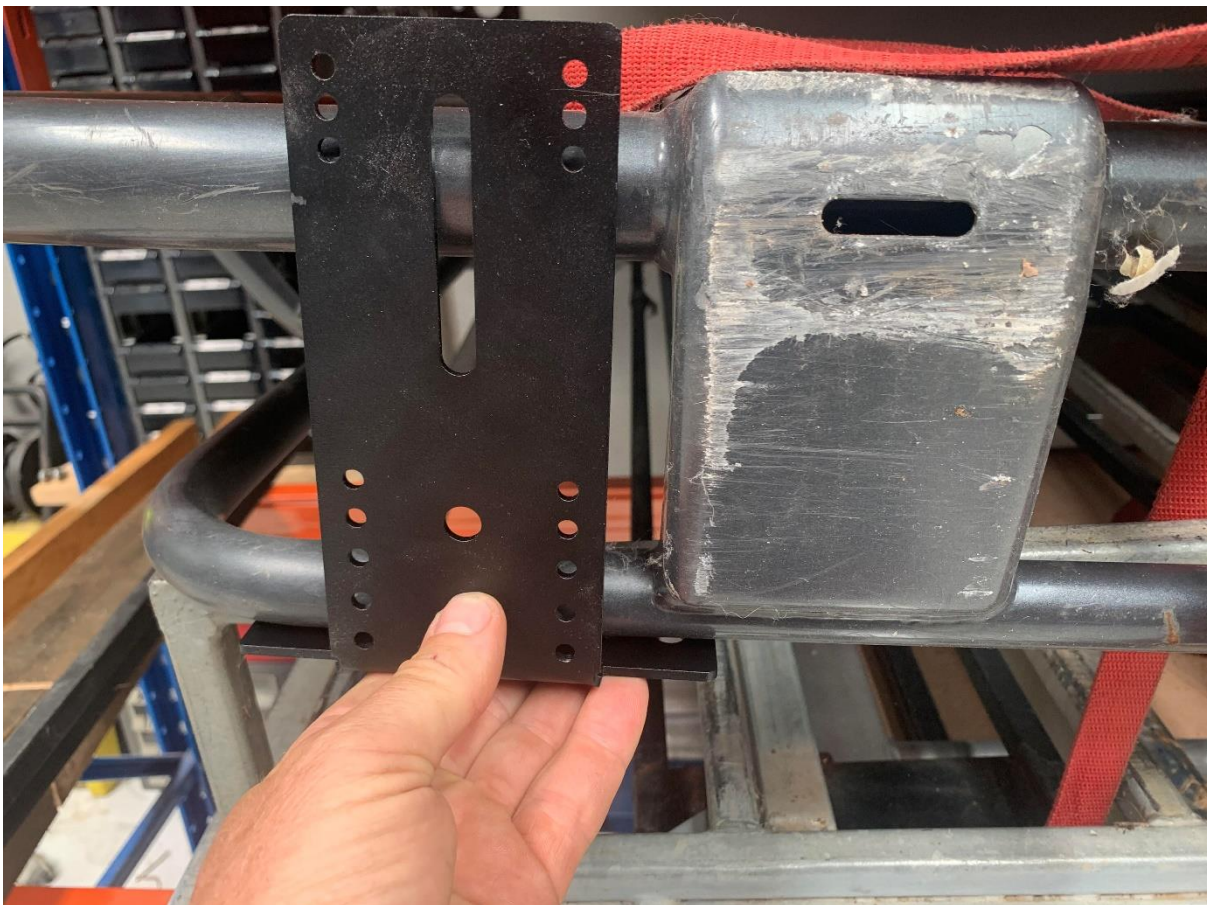


3. Take the rear passenger corner bracket (the one Pictured above) and Assemble it finger tight with a couple of bolts... test fit this first. It can be fitted either way – (Upside down works better 50% of the time) Assemble it as shown below first, then hold it in place in a few orientations on the rear passenger side of the rack until you find a position where you can get solid fixing points through the top and bottom pipe bars on your rack.



- 4.
5. using two tec screws on each side plate to fix it off securely before attempting to drill out the 9 mm bolt holes. Stand back and examine the bracket – Ensure that it is fitted level and that the face bolt positions for the awning mount are lined up vertical and square to the rack.
6. We would recommend 3 bolts on the rear of the bracket (One As far out towards the end of the bracket as far as possible to prevent twist) and one bolt or 4 rivetts on the face of the bracket. (The face being the side the awning bolts up too).

7. Now to test fit the front bracket, There are two options for the front bracket – you can repeat the same as the rear on the front of the rack if possible, in many cases the front of the basket rack will be inset too far (For cosmetic reasons) and you cant use the triangular bracket. The Alternate bracket included is much faster to install and secures the awning just as well as pole less awnings do not exert twist force on the front section. See below.



- 8.
9. Position your front Passenger side bracket where you want to install it – Orientation can be either way – through bolt it through the folded section, and then Rivet on both sides where it goes over the pipe bars. 2 Bolts and 2 Rivets is sufficient if using this bracket on the front. In some cases you can even use the Angle plate from the front bracket to get a better /



stronger mount as in pic here -

On this particular rack we had to do it this way to Ensure the bracket is 'squared up'. All racks are different. You may have to use your noggin and add new mounting holes in the bracket in rare occasions where your basket rack has extreme offsets.

10. Repeat process of lining up the front bracket above – same as you did for the rear, positioning the bracket about 3mm down from the aluminium edge plate on the tent – Position your - again tec screw it into position as a 'test fit' using 2 tec screws. Check that it sits level. And square. AGAIN - Make sure the triangular section of the bracket is facing downwards... The Lid of the tent need to be able to shut without hitting the brackets ...

Most of the Awning Types Listed above (Except the ostrich wing awning) Will need to be spaced out from the bracket 20mm to allow the tent lid to shut without striking the awning back plate. If you ordered our brackets, our online store asks you to also purchase the blocks in the case of most awning types. A Pic of the blocks here -



11. Now you can install the rear 'hook' bracket (which is ONLY REQUIRED for 270 Degree awnings) this allows you to swing the awning around and clip it onto the bracket rather than using the awnings tensioning strap. (this is NOT COMPULSORY and DOES NOT SUIT ALL AWNING TYPES). Its wise to install the awning to the brackets, then open it up and secure it with the included awning strap first. This will give you the right position for the hook bracket. (And hold the awning open while you test install it with tec screws) – Once the awning is put away and your happy with the hook brackets position, pull out the tec screws and rivett it on, filling the holes made by the tec screws by replacing them with the rivetts. You will need to drill the rivet holes out one at a time with a 6mm drill bit first or the rivetts won't fit. (Tec screws leave a 5mm hole).
12. There is a Pair of our Logo plates that you can install on the brackets once your done... Go On ! they look better on... 😊 They Rivet on in pre – drilled holes.



13. It is always better to measure twice and drill once! Take time and care to get the test fit straight and the rest of the installation will run smoothly. Get things square. Get them

straight. Position all your brackets with test fit tec screws and open / close the tent to ensure you have the set up correct before you drill all the rivet holes.

14. When using your awning, use Guy ropes and poles if any movement is evident in wind. Always pack your awning when unattended – wind will exert extreme loads on pivot points – especially in directions facing the awning. Don't break things and find out later blaming the awning. The wind will always win 😊
15. Enjoy your awning! 😊 On this 200 Series landcruiser – we had to move the rear sliding mounting plate on the ostrich awning back 70mm to the rear bolt holes to get a PERFECT fit between the ARB rack and the Wing fairing.... Lets just say that the LC200 is a tricky installation... Lets just say that EVERYTHING you touch on a 4wd will throw obstacles at you. There will always be things in the way and stuff that goes a bit wrong. Part of 4wd Mods really. Shrug it off and put the tools down if your stressing out. Your head will work better after a nights rest, and solutions for the puzzles will appear.

